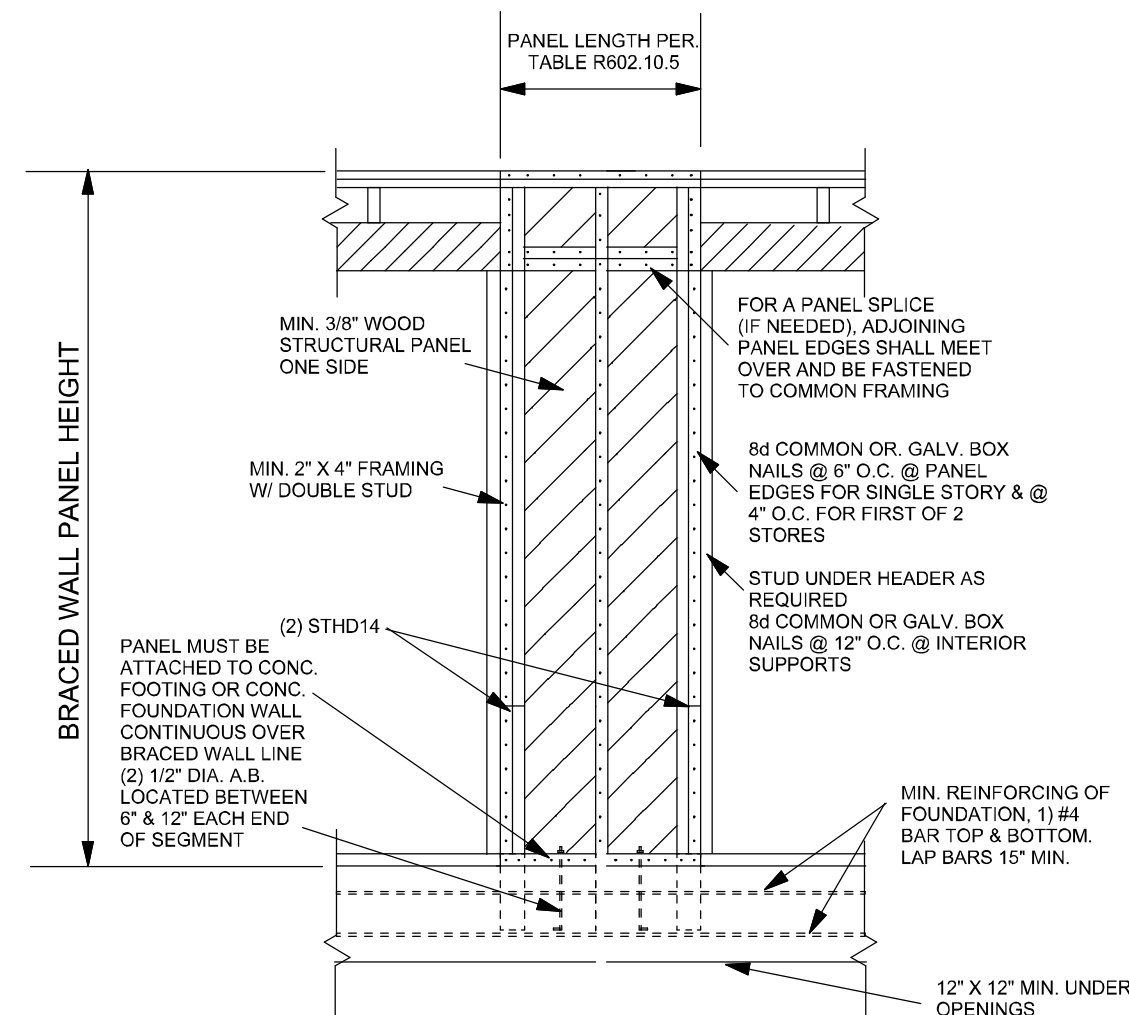
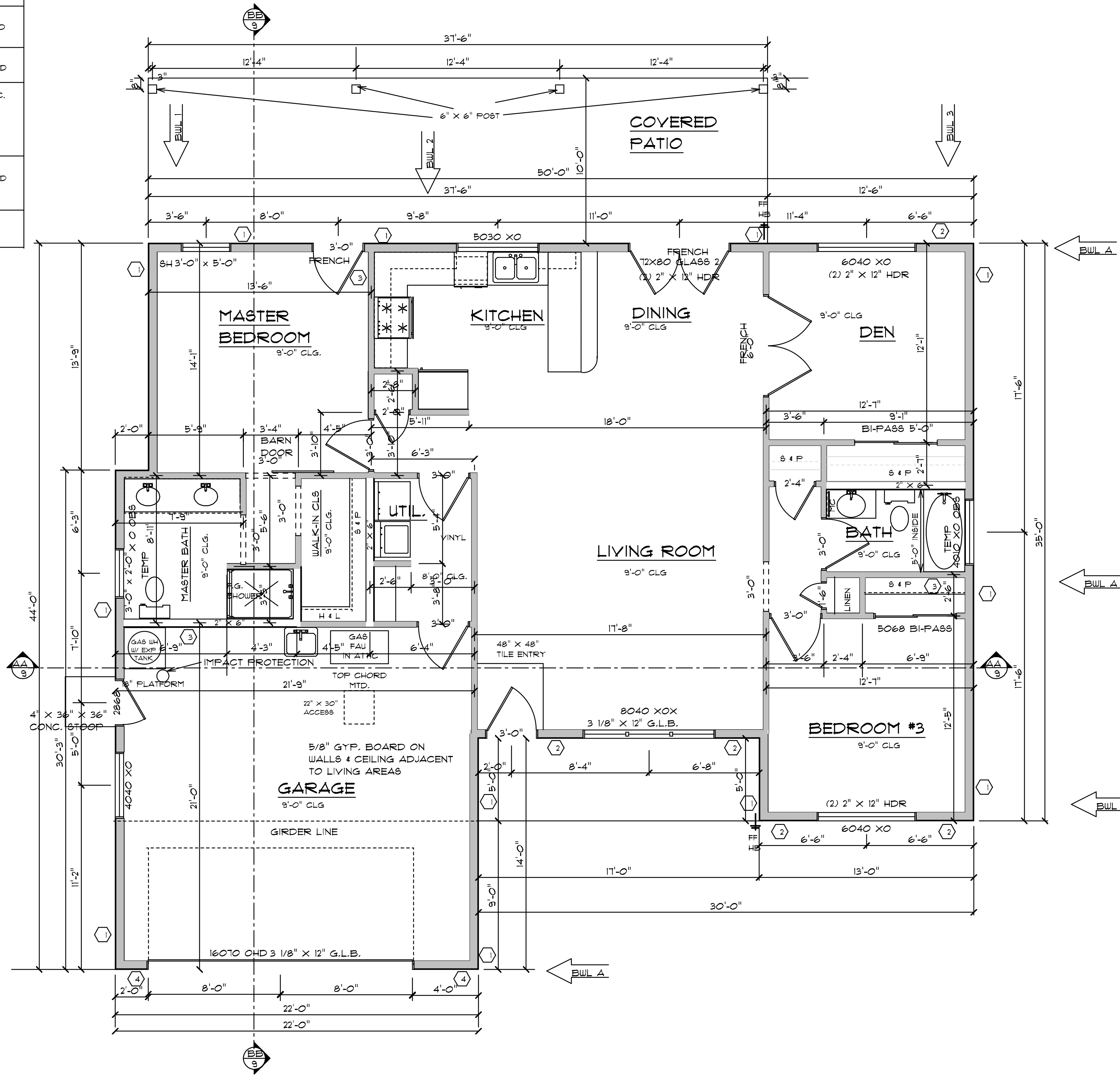
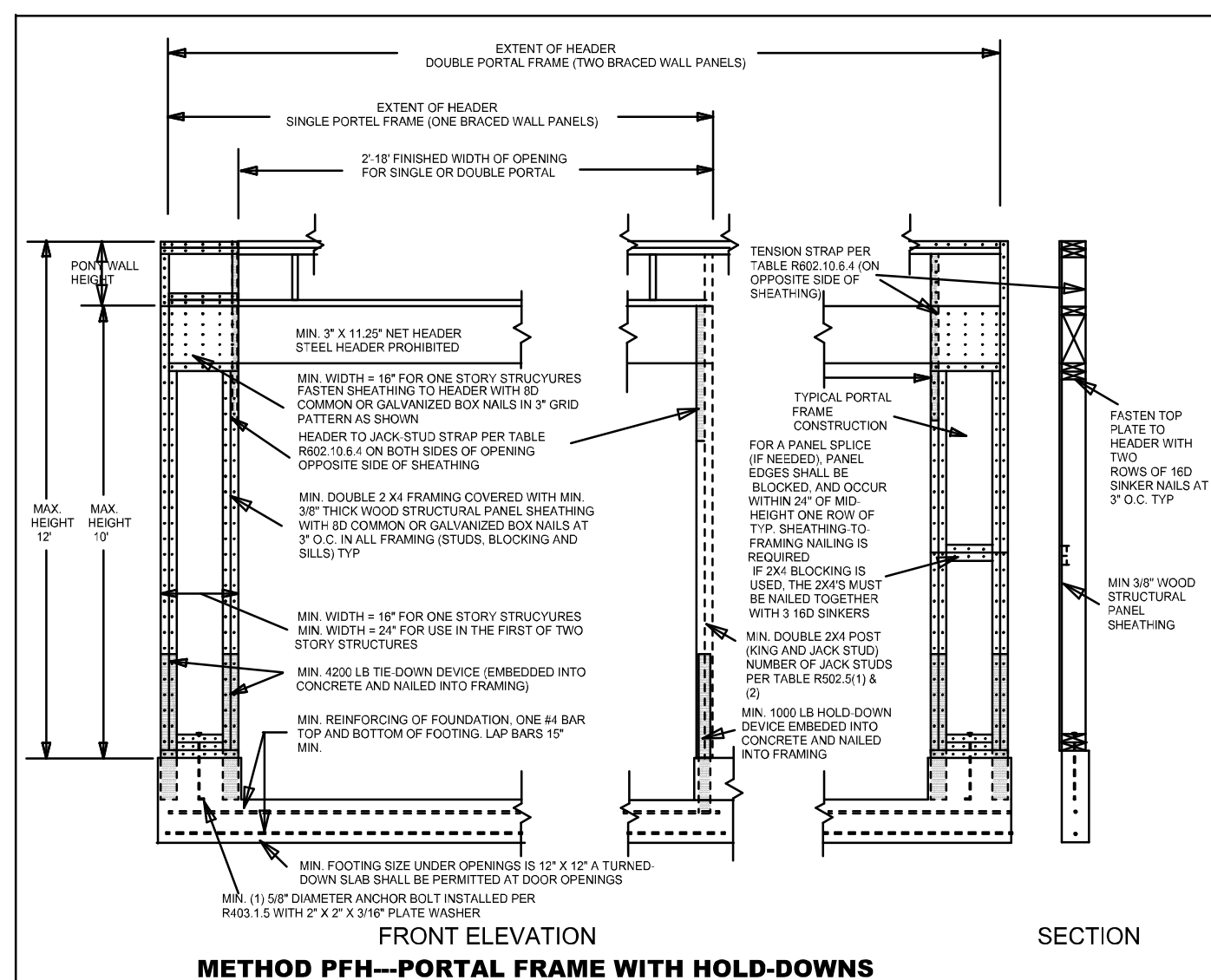


- ALL WINDOW AND DOOR HEADERS ON LOAD BEARING WALLS TO BE (2) 2" X 12" NAILED TOGETHER OR EQUIVALENT UNLESS NOTED OTHERWISE.
- BATHROOM WINDOWS TEMPERED IF LOWER THAN 60 INCHES FROM FINISH SHOWER FLOOR (PER R 308.4.5 2012 IRC.)
- PROVIDE MIN. 100 SQUARE INCHES OF MAKEUP AIR FOR DRYER (PER G2439.4 (614.5) 2012 IRC.)
- FIRE BLOCKING SHALL COMPLY WITH IRC SECTION R602.8
- ALL SILL AND SOLE PLATES SHALL BE PRESSURE TREATED OR FOUNDATION GRADE REDWOOD. IRC SECTION R403.1.6
- CEMENT, FIBER-CEMENT OR GLASS MAT GYPSUM BACKERS SHALL BE USED AS BACKERS FOR WALL TILE IN TUB AND SHOWER AREAS AND WALL PANELS IN SHOWER AREAS. SUCH WALL SURFACES SHALL EXTEND TO A HEIGHT OF NOT LESS THAN 6 FEET ABOVE FLOOR. R102.4.2 R302.1.2

| BRACED WALL PANELS | | |
|--------------------|--|--------------------------------|
| INDEX | MATERIAL | FASTENERS |
| 1 | BJUP PER R602.10.2 R602.10.4 TABLE R602.10.4 MIN. 3/8" WOOD PANEL 48" IN LENGTH | 6d COMMON 6" EDGES/12" FIELD |
| 2 | ABUP PER R602.10.6.1 TABLE R602.10.5 BLKD @ ALL EDGES | 8d COMMON 6" EDGES/12" FIELD |
| 3 | 1/2" GYP. BOARD, STUD MAX 24" O.C. 48" IN LENGTH BOTH SIDES 96" IN LENGTH ONE SIDE | NAIL 1" O.C. SPEC. R602.3(1) A |
| 4 | PER R602.10.6 CONSTRUCTION OF METHODS ABW, PFH | 8d COMMON 6" EDGES/12" FIELD |
| 5 | 3/8" OSB X 4'-0" 6d 4" O.C. EDGES 8" O.C. IN THE FIELD | STHD14 |



4 & 13 ALTERNATE BRACED WALL PANEL
SCALE: NOT TO SCALE



4 FLOOR PLAN
SCALE: 1/4" = 1'-0"

DOUG AND DOREEN FREEMAN
1452 SQFT LIVABLE
FLOOR PLAN

| REVISION | BY |
|----------|----|
| | |
| | |
| | |
| | |

FREEMAN RESIDENCE EDGEWOOD CONSTRUCTION

| | |
|------------------------|------------|
| DRAWN BY BYB | |
| CHECKED BY | |
| DATE April 23, 2018 | |
| SCALE | SHEET |
| JOB | 4 OF 13 |