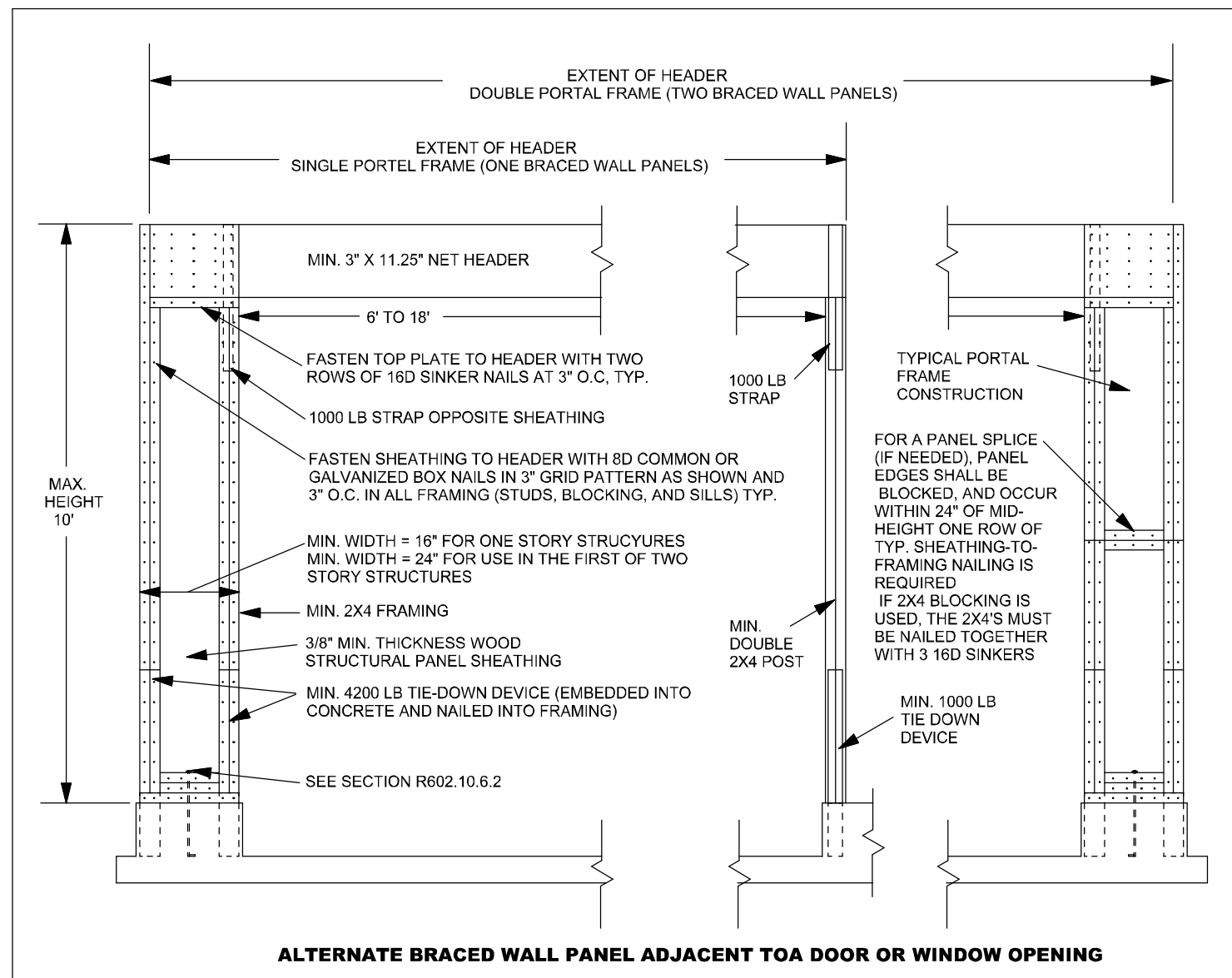
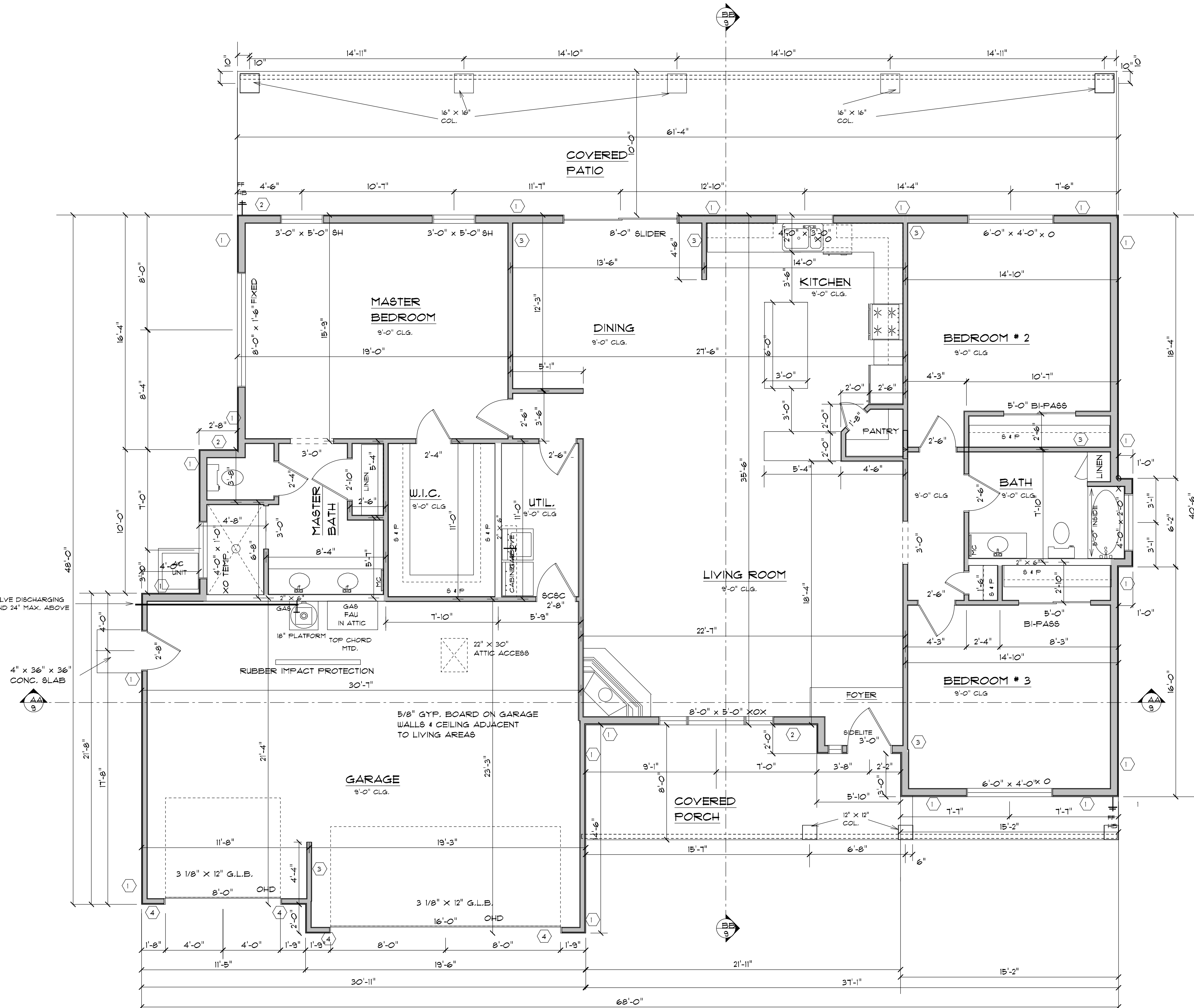


BRACED WALL PANELS		
INDEX	MATERIAL	FASTENERS
1	BJWP PER R602.10.3 F3 MIN. 3/8" WOOD PANEL 48" IN LENGTH	8d COMMON 6" EDGES/12" FIELD
2	ABWP PER R602.10.6 BLKD @ ALL EDGES	8d COMMON 6" EDGES/12" FIELD
3	1/2" GYP. BOARD, STUD MAX 24" O.C. 48" IN LENGTH BOTH SIDES 36" IN LENGTH ONE SIDE	NAIL 1" O.C. SPEC. R602.3(1) A
4	ABWP PER R602.10.6 FIG. R602.10.6.2 SEE ABW-ADJ. TO OPENINGS	8d COMMON 6" EDGES/12" FIELD
5		PER ENG.

- ALL WINDOW AND DOOR HEADERS ON LOAD BEARING WALLS TO BE (2) 2" X 12" NAILED TOGETHER OR EQUIVALENT UNLESS NOTED OTHERWISE.
- BATHROOM WINDOWS TEMPERED IF LOWER THAN 56 INCHES FROM FINISH SHOWER FLOOR (PER R 308.4 2006 IRC.)
- PROVIDE MIN. 100 SQUARE INCHES OF MAKEUP AIR FOR DRYER (PER R2431.4 (613.5) 2006 IRC)
- FIRE BLOCKING SHALL COMPLY WITH IRC SECTION R602.8
- ALL SILLS AND SOLE PLATES SHALL BE PRESSURE TREATED OR FOUNDATION GRADE REDWOOD. IRC SECTION R403.1.6
- CEMENT, FIBER-CEMENT AN GLASS MAT GYPSUM BACKERS SHALL BE USED AS BACKERS FOR WALL TILE IN TUB AND SHOWER AREAS AND WALL PANELS IN SHOWER AREAS. SUCH WALL SURFACES SHALL EXTEND TO A HEIGHT OF NOT LESS THAN 6 FEET ABOVE FLOOR. R102.4.2 R301.2

PRESSURE RELEASE VALVE DISCHARGING TO LOCATION 6" MIN. AND 24" MAX. ABOVE FINISHED GRADE.



REVISED

1. 16 September, 2005 w/o Revisions for Production
2.
3.
4.
5.
6.
7.

SCALE
1/8" = 10' (11" X 17")
1/4" = 10' (24" X 36")

JOB #
XXXX

2005 LIVABLE

JOB NAME:
2005 SPEC

TITLE:
FLOOR PLAN

PRODUCTION APPROVAL BY:	X	DATE:
DRAWN BY:	8VB	
DATE OF ORIGIN:	2-13-06	
DCO CHECK BY:		
CHECK DATE:		
PLOT DATE & TIME:	December 03, 2011 12:01 PM	
WAVE	2005 SPEC	
SHEET	4	
OF	9	