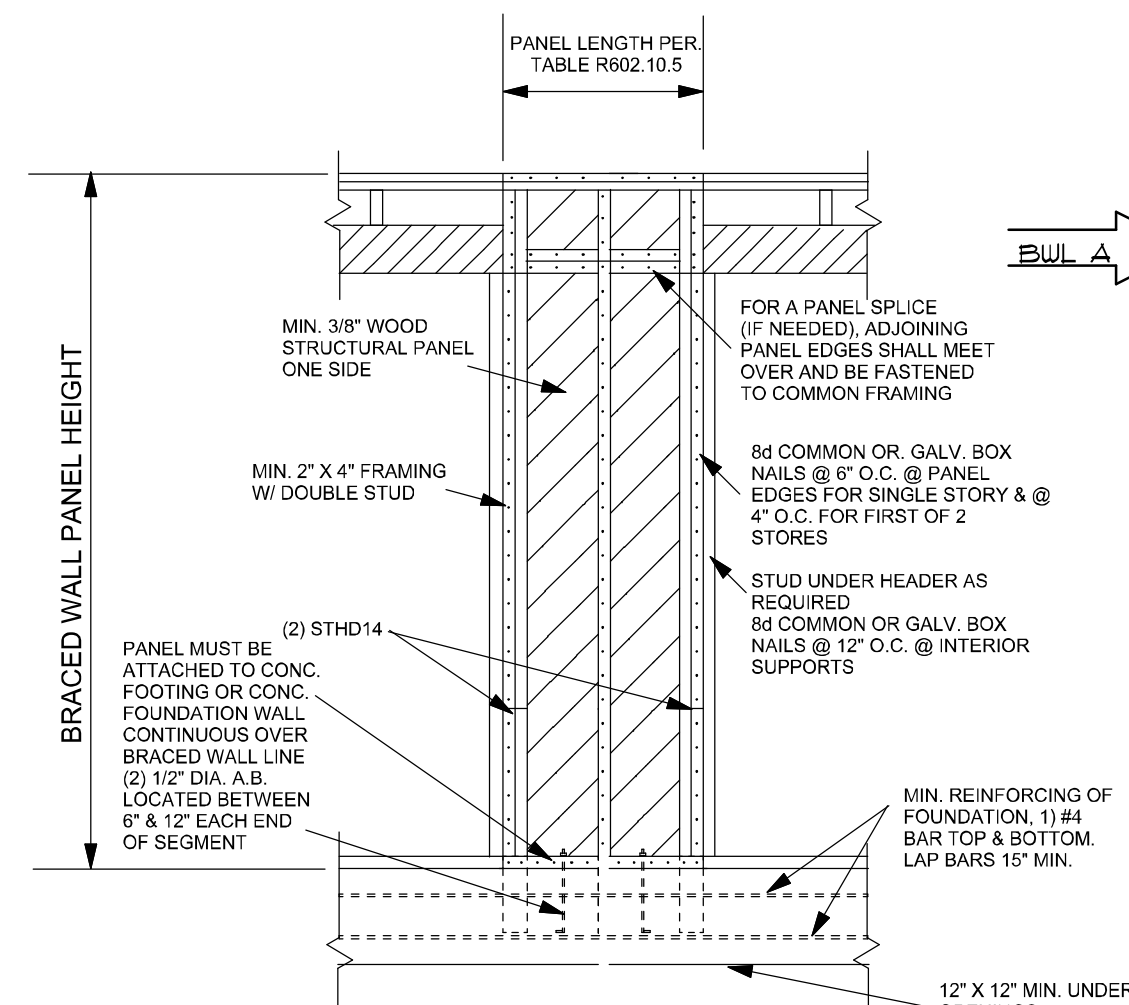
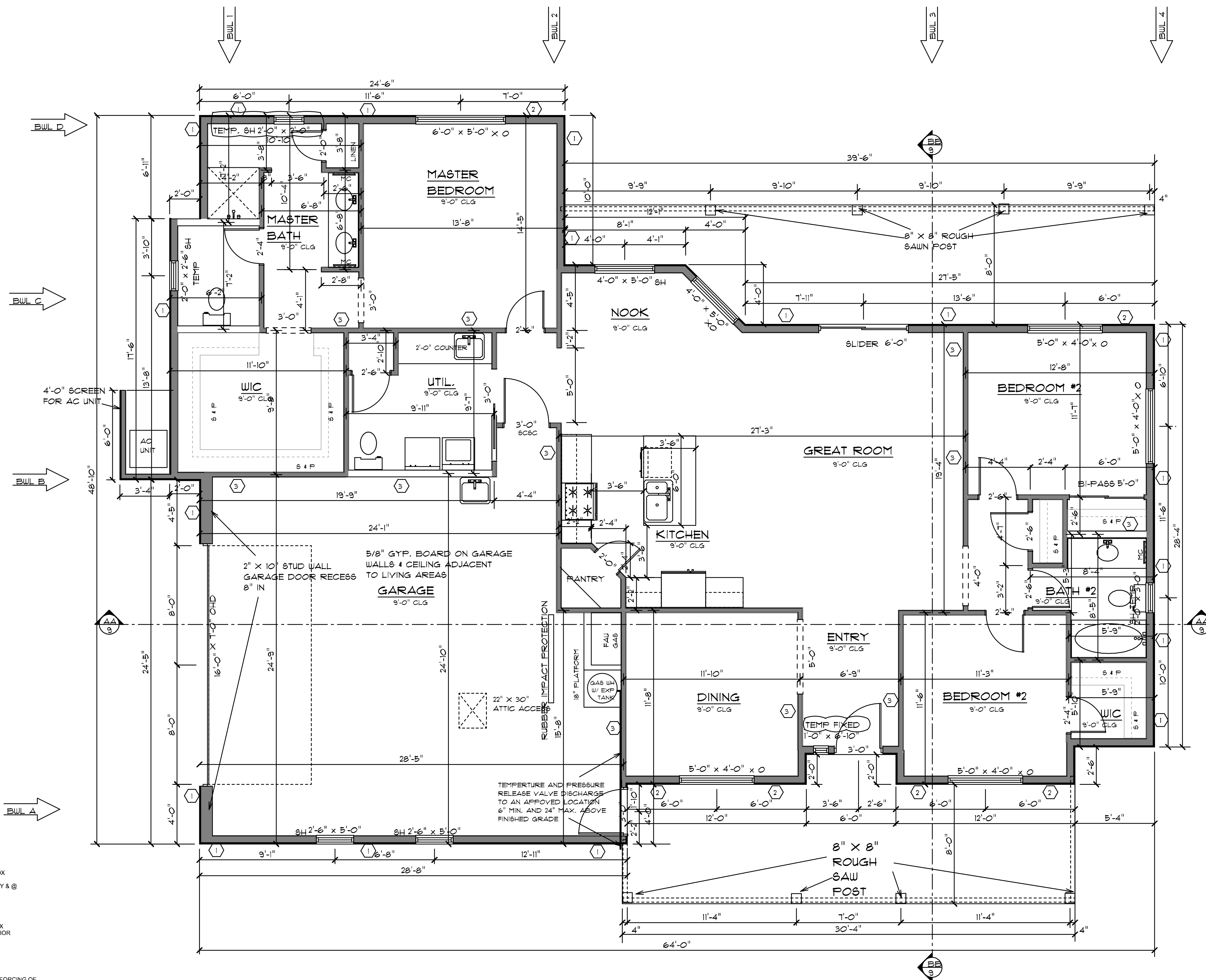


| BRACED WALL PANELS | | |
|--------------------|---|-----------------------------------|
| INDEX | MATERIAL | FASTENERS |
| 1 | BWP PER R602.10.2 R602.10.4 TABLE R602.10.4 MIN. 3/8" WOOD PANEL 48" IN LENGTH | 6d COMMON 6" EDGES/12" FIELD |
| 2 | ABWP PER R602.10.6.1 TABLE R602.10.5 BLKD # ALL EDGES | 8d COMMON 6" EDGES/12" FIELD |
| 3 | 1/2" GYP. BOARD, STUD MAX 24" O.C. 48" IN LENGTH BOTH SIDES 96" IN LENGTH ONE SIDE | NAIL 1" O.C. SPEC. R602.3(1) A |
| 4 | PER R602.10.6 CONSTRUCTION OF METHODS ABW. | 8d COMMON 6" EDGES/12" FIELD |
| 5 | 3/8" OSB X 4'-0" 6d 4" O.C. EDGES 8" O.C. IN THE FIELD | STHD14 |

- ALL WINDOW AND DOOR HEADERS ON LOAD BEARING WALLS TO BE (2) 2" X 12" NAILED TOGETHER OR EQUIVALENT UNLESS NOTED OTHERWISE.
- BATHROOM WINDOWS TEMPERED IF LOWER THAN 60 INCHES FROM FINISH SHOWER FLOOR (PER R 308.4.5 2012 IRC.)
- PROVIDE MIN. 100 SQUARE INCHES OF MAKEUP AIR FOR DRYER (PER G2439.4 (614.5) 2012 IRC)
- FIRE BLOCKING SHALL COMPLY WITH IRC SECTION R602.8
- ALL SILLIS AND SOLE FLATES SHALL BE PRESURE TREATED OR FOUNDATION GRADE REDWOOD, IRC SECTION R403.1.6
- CEMENT, FIBER-CEMENT AN GLASS MAT GYPSUM BACKERS SHALL BE USED AS BACKERS FOR WALL TILE IN TUB AND SHOWER AREAS AND WALL PANELS IN SHOWER AREAS. SUCH WALL SURFACES SHALL EXTEND TO A HEIGHT OF NOT LESS THAN 6 FEET ABOVE FLOOR. R102.4.2 R307.2
- RECESS ALL WINDOWS 2" IN



4 & 11 ALTERNATE BRACED WALL PANEL
SCALE: NOT TO SCALE



4 FLOOR PLAN
SCALE: 1/4" = 1'-0"

CONTINUOUS SHEAR W/
3/8" OSB NAILED 6"
ON EDGE 12" IN THE FIELD

| REVISION | BY |
|----------|----|
| | |
| | |
| | |
| | |
| | |

GRACE RESIDENCE 1177 SQFT LIVABLE
EDGEWOOD CONSTRUCTION

| | |
|-------------------------|------------|
| DRAWN BY BYB | |
| CHECKED BY | |
| DATE August 16, 2018 | |
| SCALE | SHEET |
| JOB | 4 OF 13 |